

Ellinwood

KANSAS



*Join us on streets
of golden wheat!*

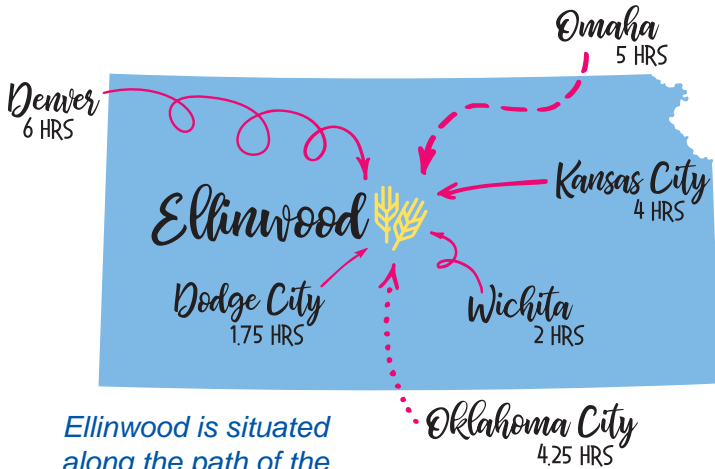
ELLINWOODCHAMBER.COM

Welcome to

ELLINWOOD

With a historic past and promising future, Ellinwood is the ideal place to visit, work, and live. Our community thrives on tradition and fun, hosting events all year-round.

We're excited to welcome you to our beautiful town!



Ellinwood is situated along the path of the historic Santa Fe Trail, just north of the Arkansas River, and along the Kansas Wetlands & Wildlife National Scenic Byway.

We're right near the junction of US Highways 56 and 281 and KS Highways 156 and 96.

Join us on streets of golden wheat

ESPECIALLY ELLINWOOD 4-7

AROUND THE UNDERGROUND ... 8-9

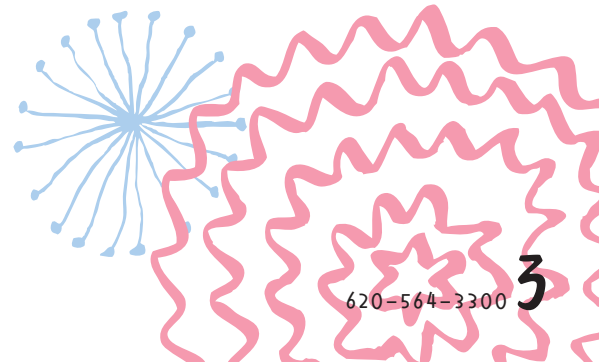
FESTIVALS & FUN 10-13

ELLINWOOD ESSENTIALS 14-15

THE GREAT OUTDOORS 16-17

RESOURCES 20-25

MAP 26-27





Especially Ellinwood

Strong infrastructure makes Ellinwood a great place to live. A dedicated city government, skilled healthcare and emergency services, and great recreational options make it good fit for families looking for a home. For additional (and more up-to-date) information about the city and local amenities, try these resources:

ELLINWOOD CITY OFFICE

104 East 2nd Street, PO Box 278
Ellinwood, KS 67526

City: (620) 564-3161
Police: 620-564-3001
Fire: 620-564-3161
EMS: 620-564-2408

cityofellinwoodks.com

Emergency?
CALL 911

ELLINWOOD CHAMBER OF COMMERCE

110 1/2 North Main Street, PO Box 482
Ellinwood, KS 67526

(620) 564-3300

ellinwoodchamber.com

BARTON COUNTY, KANSAS

1400 Main Street, Room 107
Great Bend, KS 67530

(620) 793-1800

bartoncounty.org



Check out the golden
wheat sculptures on our
streetlight posts.

With wheat fields as far as the eye can see, we live among the “amber waves of grain” in our beautiful Ellinwood.

Ellinwood has a strong agricultural background, with farmers still focusing on wheat crops in local fields.

In 1997, the wheat shocks “sprouted” courtesy of an Ellinwood Garden Club project, with help local individuals, businesses, and organizations.



From preschool to college, we are always learning. Ellinwood is home to great schools, both public and church-based. The options available allow families to choose the best for their children and themselves.

ST. JOHN'S CHILD DEVELOPMENT CENTER
Parochial child development center offering 3- and 4-year-old preschool
615 N Main St and 512 N Wilhelm Ave, Ellinwood
620-564-2885 and 620-564-2044

ELLINWOOD GRADE SCHOOL
Public school in USD 355, grades K-6
310 East 6th St, Ellinwood | 620-564-2750
usd355.org

ST. JOSEPH CATHOLIC SCHOOL
Parochial school, grades K-8
111 West 3rd St, Ellinwood | 620-564-2721
stjosephellinwood.com/school

ELLINWOOD MIDDLE/HIGH SCHOOL
Public school in USD 355, grades 7-12
200 East 2nd St, Ellinwood | 620-564-3136
usd355.org



BARTON COMMUNITY COLLEGE
Less than a 15-minute drive from Ellinwood, Barton serves approximately 17,000 students in classroom, online, or hybrid courses and offers technical training.
245 NE 30 Ave, Great Bend, | 620-792-2701
bartonccc.edu or 800-748-7594

HEALTHY FAMILIES *grow here*

Ellinwood is home to quality healthcare organizations to care for visitors and locals. Ellinwood Hospital and Clinic, a full-service hospital, provides 24-hour emergency care, state-of-the-art imaging services, a medical laboratory, therapy services, and outpatient and inpatient care. The Ellinwood Clinic serves families, from newborns to seniors, with care provided by three physicians and two mid-level practitioners.

ELLINWOOD HOSPITAL AND CLINIC
Hospital: 605 N Main St, Ellinwood | 620-564-2548
Clinic: 611 N Main St, Ellinwood | 620-564-3771
ellinwooddistricthospital.org

SAUER CHIROPRACTIC & SPORTS MEDICINE
6 N Main St, Ellinwood | 620-564-2555

ELLINWOOD COUNTRY LIVING
302 N Main, Ellinwood | 620-564-2100

WOODHAVEN CARE CENTER
510 W 7th St, Ellinwood | 620-564-2337
fivestarseniorliving.com/communities/ks/ellinwood/woodhaven-care-center



Around the UNDERGROUND



Ellinwood's rapid growth in the 1870s and 80s filled the business blocks of town from upstairs all the way down to the basements.

The lower level had a variety of store fronts and shops: drummer rooms, barber shops, sample rooms, bath house, saloons, and meat storage.

In the days of "lemonade," the underground provided easy passages to some of the more prosperous endeavors in the community during Prohibition.

Visitors can stroll through passageways to three of yesterday's underground shops and hear tales of Kansas' constitutional prohibition and how it affected Ellinwood and its "Little Germany" reputation.

Don't forget to check out the Underground Saloon under the Historic Wolf Hotel, complete with Prohibition-era style and drinks.

UNDERGROUND TUNNEL TOURS

Main Street and Santa Fe Blvd (US 56 Hwy)

The Wolf Hotel & Underground Storefronts
(East side of Main Street)

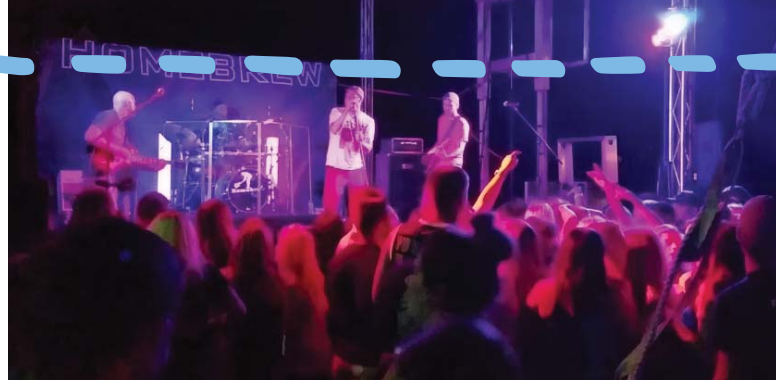
The Ellinwood Underground
(under the Dick Building, West side of Main Street)

Call for pricing and to reserve tours.

(620) 617-6915 or (620) 564-2400



FESTIVALS & Fun



ANNUAL CHAMBER BANQUET

January - Ellinwood Chamber of Commerce

Local businesses and Chamber members from around the community come together to celebrate Ellinwood.

VALENTINE'S DINNER

February - Ellinwood Rotary Club

The Rotary hosts a Valentine's dinner and presents the Ellinwood Distinguished Citizen of the Year Award.

LENTEN LUNCHES

Lent - All Churches

Ellinwood Churches host Wednesday lunches throughout Lent at the St. Joseph Parish Center.

CITY-WIDE GARAGE SALE

Spring/Fall - Ellinwood Chamber of Commerce

4TH OF JULY FIREWORKS DISPLAY

July - City of Ellinwood

Check out the fireworks from the football stadium to celebrate our Independence Day. (Check for date of display - not always on July 4, depending on weekday)

AFTER HARVEST FESTIVAL

July - Ellinwood Chamber of Commerce

The Chamber organizes a three-day celebration of Ellinwood and our history beginning the third Thursday of July, which is right after wheat harvest each year.

THURSDAY

Activities begin with Swimming Pool Olympics, Community Barbecue, ice cream social, wristband night at the carnival, beer garden, and more throughout the day on Thursday.

FRIDAY

Friday activities include the Community Pancake Feed first thing in the morning, followed later by open tunnel tours, food court, beer garden, concerts, and entertainments. Many class reunions take place on Friday.

CHECK OUT THE NEXT PAGE FOR SATURDAY INFO



More Festivals

AFTER HARVEST FESTIVAL



SATURDAY

Saturday is the big day for AHF, starting early with the 5K and 3-on-3 basketball tournament. The parade starts at 10am, followed by the Family Fun Fair with food court, kids activities, touch-a-truck, sanctioned pedal pull (winners go to the Kansas State Fair), watermelon eating contest, turtle races, petting zoo, beer garden, duck run, and more.

Saturday night is the big dance at the park, beer garden, food court, and carnival.

Events throughout the festival are hosted and/or organized by multiple companies and organizations, and you'll find friendly faces you know at many of the weekend's events. Class reunions for Ellinwood High School students are held each year, with the Gathering of the Eagles, an all-school reunion, hosted every 5 years.

For detailed information and this year's schedule, go to ellinwoodchamber.com.

CRAFT BEER FESTIVAL & BATTLE OF THE BADGES

October - American Legion Post #320 and Ellinwood EMS Foundation

The Legion brings in delicious craft beers from close and far breweries for a true Ellinwood "Little Germany" tradition - Oktoberfest. Sample chili made by first responders across the county in the chili cook-off.

GRAVESIDE CONVERSATIONS

October - Ellinwood Historical Society
Meet Ellinwood residents from the 1870s to 1950s at the cemetery to learn more about our town's history.

CHILDREN'S HALLOWEEN PARADE

October - Ellinwood Chamber of Commerce

ST. JOSEPH'S GERMAN BUFFET

November - St. Joseph's Catholic School
Enjoy traditional German foods and raffles at St. Joseph Parish Center to support St. Joseph Catholic School.

CHARITY CASINO NIGHT

November - KS Sidewinders Motorcycle Club
Cards, raffles, and fun for a good cause.

CHRISTKINDLMARKET

December - Ellinwood Chamber of Commerce

Ellinwood transforms into an authentic German holiday village brimming with traditional Christmas activities.

Enjoy holiday shopping in stores and with numerous vendors downtown, taste homemade candies and cookies by the pound at a traditional German Bäckerei, get your photo taken with Sankt Nikolaus, win prizes, and watch the Living Nativity and tree lighting.



CHRISTMAS GALA

December - Ellinwood Hospital Foundation
Following Christkindlmarket, the Foundation hosts dinner, drinks, and silent and live auctions for donors to support healthcare in our community.

ELLINWOOD

Essentials



DINING



GROCERY



FUEL



ALCOHOL



RETAIL

Delicious eats and good drinks await at these Ellinwood favorites, or you can make your own meal after a quick stop for groceries. And don't forget to fill up for a cruise around town and stop by for a little shopping.

ANNIE MAE'S

518 E Santa Fe Blvd, Ellinwood | 620-564-3676

CASEY'S GENERAL STORE

401 E Santa Fe Blvd, Ellinwood | 620-564-2141

DOLLAR GENERAL

511 E Santa Fe Blvd, Ellinwood | 620-566-3092

AMERICAN LEGION POST 320

117 E Santa Fe Blvd, Ellinwood | 620-564-3252

ELLINWOOD EMPORIUM

2 N Main St, Ellinwood | 620--564-2498

ELLINWOOD FAMILY FOODS

210 E Santa Fe Blvd, Ellinwood | 620-564-3011

ELLINWOOD PACKING PLANT, INC.

701 W Santa Fe Blvd, Ellinwood | 620-564-3156

EXTREME ICE

100 N Main St, Ellinwood | 620-564-3769

GATHER & HOLY SMOKES BBQ CATERING

19 N Main St, Ellinwood | 620-627-3225

GUNN'S ANTIQUES & COLLECTIBLES

107 N Main, Ellinwood | 620-388-2562

HISTORIC WOLF HOTEL AND UNDERGROUND SALOON

1 N Main St, Ellinwood | 620-639-6915

KANSAS EARTH & SKY CANDLE

23 N Main, Ellinwood | 785-218-7512

LK'S LIQUOR

602 E Santa Fe Blvd, Ellinwood | 620-564-3110

LONE WOLF CAFÉ AND CATERING

111 E 1st St, Ellinwood | 620-564-2829

MOUNTAIN MAN NUT AND FRUIT CO.

620-564-2227

N'BLOOM FLORAL AND GIFTS

111 N Main St, Ellinwood | 620-564-3480

POP N' SHOP

410 E Santa Fe Blvd, Ellinwood | 620-564-2087

SUE'S BBQ (CATERING)

205 W 10th, Ellinwood | 620-564-3354

ZIP STOP

200 E Santa Fe Blvd, Ellinwood | 620-564-2813



THE GREAT Outdoors

Bring the outdoors close to home.

With beautiful scenery and abundant wildlife, Ellinwood is the place for the outdoor enthusiast and their family. Sports and recreation to hunting and fishing, there are activities for anyone who loves to be outside.

WETLANDS AND WILDLIFE NATIONAL SCENIC BYWAY

kansaswetlandsandwildlifescenicbyway.com

This 77-mile Byway connects two of the world's most significant natural wetlands - Cheyenne Bottoms and Quivira National Wildlife Refuge. The Byway offers more than beautiful wetlands and birds. You'll see native stone buildings, underground tunnels, metal street art, a stretch of the Santa Fe Trail, and more in the corridor communities along the way.

CHEYENNE BOTTOMS WILDLIFE AREA

Cheyenne Bottoms plays host to millions of migrating birds each year, including waterfowl, shorebirds, even Whooping Cranes, one of the rarest birds in North America. It is home to hundreds of other species and is a favorite stop for hunting, bird watching, and more for locals and visitors from around the world.

The Bottoms was designated as a "Wetland of International Importance" due to its importance as a stopover for migrating birds along the Central Flyway. Local points of interest include Kansas Wetlands Education Center (KWEC), information kiosks, picnic shelter, and scenic overlook.

KANSAS WETLANDS EDUCATION CENTER

592 NE K-156 Hwy, Great Bend, KS 67530

877-243-9268, wetlandscenter.fhsu.edu

Monday-Saturday 9am-5pm, Sunday 1pm-5pm

Closed Mondays November through March

Every visit to Cheyenne Bottoms should include a stop at KWEC. It's more than a nature center - it includes fun and educational exhibits, live animals, gift store, educational programs, and tours of Cheyenne Bottoms. Admission is free.

QUIVIRA NATIONAL WILDLIFE REFUGE

A unique combination of rare inland salt marsh and sand prairie, Quivira NWR was established in 1955 to provide and protect vital habitat for migratory waterfowl in the Central Flyway. It's 22,135 acres provide many opportunities for locals and visitors for hunting, fishing, hiking, wildlife viewing, and more.



Resources

AGRICULTURE, OIL, & AUTO

BARTLETT GRAIN

16 NE 60 Ave, Great Bend | 620-792-0526
bartlettandco.com

BARTON COUNTY FEEDERS

1164 SE 40 Road, Ellinwood | 620-564-2200
ilsbeef.com

CHEYENNE TRAILER SALES

97 NE 110 Ave, Ellinwood | 620-564-2036

DICK ENGINE AND MACHINE SERVICE INC

803 E Santa Fe, Ellinwood | 620-564-2238

D.J. OIL OPERATIONS

305 E 6th, Ellinwood | 620-564-2759

ELLINWOOD TANK SERVICE, INC

601 E Santa Fe, Ellinwood | 620-793-0246

GREAT BEND CO-OP

104 S Kennedy Ave, Ellinwood | 620-564-3056
greatbendcoop.com

HI-LA ENGINE PUMP AND SUPPLY, INC

402 S Main, Ellinwood | 620-564-2360

KNOP AUTO PARTS AND REPAIR, INC

305 E Santa Fe, Ellinwood | 620-564-3431
knopauto.com

KNOP SAND CO. INC

1059 SE 15 Rd, Ellinwood | 620-564-3166
knopsand.com

KWIK KAR WASH

413 E Santa Fe Blvd, Ellinwood | 620-786-2068

RA TRANSPORT, LLC & RATJAN LOGISTICS, LLC

114 N Main, PO Box 57, Ellinwood | 620-566-1480

RMACS TRUCK AND EQUIPMENT

302 E Santa Fe, Ellinwood | 620-564-2645

SOUTHWIND DRILLING

8 N Main St, Ellinwood | 620-564-3800

TRI-AG

211 E 2nd St, Ellinwood | 620-562-7226

ATTRACTIONS

MUSEUM OF ELLINWOOD

104 N Main, Ellinwood | 620-564-2886
ellinwoodhistoricalsociety.com

ELLINWOOD SCHOOL COMMUNITY LIBRARY

210 N Schiller, Ellinwood | 620-564-2306

ELLINWOOD UNDERGROUND TUNNEL TOURS

Main & Santa Fe Blvd, Ellinwood | 620-617-6915

CIVIC & SERVICE CLUBS

ELLINWOOD AMERICAN LEGION #320

117 E Santa Fe, Ellinwood | 620-564-3252

ELLINWOOD BOY SCOUTS AND CUB SCOUTS

411 W 5th Street, Ellinwood | 620-617-6700

ELLINWOOD ENERGIZERS 4 H CLUB

210 E C Street, Ellinwood | 620-617-1008

ELLINWOOD GARDEN CLUB

314 W 3rd Street, Ellinwood | 620-564-2920

ELLINWOOD HERITAGE CENTER AND CLUB

103 N Main, Ellinwood | 620-564-3649

ELLINWOOD HOSPITAL AUXILIARY

605 N Main, Ellinwood | 620-564-2548

ELLINWOOD LIONS CLUB

1304 Broadway Rd, Great Bend | 620-580-4374

ELLINWOOD ROTARY CLUB

10 N Main, Ellinwood | 620-564-2090

KANSAS SIDEWINDERS MOTORCYCLE CLUB

21 N Main, Ellinwood | 620-639-1383

SAINTS PETER AND PAUL HERITAGE ASSN

498 NE 110 Ave, PO Box 324, Ellinwood | 620-566-7310

TRI-CIRCLE CLUB

109 Pohlman, Ellinwood | 620-564-2953

CHURCHES

CALVARY BAPTIST CHURCH

307 W A St, Ellinwood | 620-564-2070

FIRST BAPTIST CHURCH

503-B SE 110 Ave, Ellinwood | 620-564-2875

IMMANUEL UNITED CHURCH OF CHRIST

701 N Fritz, PO Box 88, Ellinwood | 620-564-2950

ST. JOHN'S LUTHERAN CHURCH

512 N Wilhelm, Ellinwood | 620-564-2044
stjohnnellinwood.org

ST. JOSEPH CATHOLIC CHURCH

214 N Main, Ellinwood | 620-564-2534
stjosephellinwood.com

UNITED METHODIST CHURCH

300 W 1st St, Ellinwood | 620-564-2056

COMMUNICATIONS, MEDIA, & ADV.

EAGLE COMMUNICATIONS

1200 Baker Ave, Great Bend | 620-792-3647
greatbendpost.com

THE ELLINWOOD LEADER

105 N Main St, Ellinwood | 620-564-3116
midsknews.com

H&B COMMUNICATIONS

108 N Main St, Ellinwood | 800-432-8296
hbcomm.net

INALERT

PO Box 96, Ellinwood | 620-564-3766

THILL PRINTING CO, INC.

2109 Washington St, Great Bend | 800-973-8866
thillprinting.com

THE SIGN SHOP OF ELLINWOOD

206 E D St, Ellinwood | 620-786-5161

CONSTRUCTION & HOME IMPROVEMENT

BLUE STAR CONTRACTING, LLC

PO Box 124, Ellinwood | 620-564-2099
bluecontractingllc.com

C&V KANSAS DOORS

1107 10th St, Great Bend | 620-796-2500
cvkdpros.com

EXTERIOR DESIGNS

102 S Main Street, Ellinwood | 620-564-3716

HOME LUMBER AND SUPPLY

116 E Santa Fe, Ellinwood | 620-564-3241
homelumberandsupply.com

ISERN ELECTRIC HEAT & AIR

PO Box 13, Ellinwood | 620-564-3377
iserninc.com

JOINER CONSTRUCTION, INC

411 Santa Fe, PO Box 238, Ellinwood | 620-564-2818
joinerconstructioninc.net

KIMPLE FLOORING AND REMODELING

106 N Main, Ellinwood | 620-564-2277

MICKEY'S APPLIANCE REPAIR, LLC

51 SE 80 Ave, Great Bend | 620-617-4658
mickeysappliancerepair.com

FINANCIAL, INSURANCE, & LEGAL

AMERICAN FAMILY INSURANCE,

CALEB SCHULTZ AGENCY

106 E 1st, PO Box 36, Ellinwood | 620-564-2600
calebschultzagency.com

ADAMS, BROWN, BERAN, AND BALL, CHTD.

PO Box Drawer J, Great Bend | 620-792-2428
abbb.com

CENTRAL NATIONAL BANK

1916 N Main, Great Bend | 620-603-6447
centralnational.com

COMMUNITY BANK OF THE MIDWEST

211 E Santa Fe, Ellinwood | 620-564-3700
communitybankmidwest.com

DOLL INSURANCE

306 E Santa Fe, Ellinwood | 620-564-3583

FARMERS MUTUAL INSURANCE

16 N Main, PO Box 396, Ellinwood | 620-564-3281

JENSEN ASSOCIATES INC.

16 N Main, PO Box 118, Ellinwood | 620-564-2020
jensenassociatesinc.com

JOHN JACO INC.

PO Box G, Great Bend | 620-792-2541
johnjacorealty.com

KELLER REAL ESTATE & INSURANCE AGENCY

1101 Williams, PO Box 945, Great Bend | 620-617-7467

KENT ROTH LAW OFFICE

10 N Main, Ellinwood | 620-564-2090

LAW OFFICE OF DONALD E. ANDERSON II, LLC

1324 Kansas Ave, Great Bend | 620-564-2923
ewoodlaw.com

NATIONAL BILLING, LLC

105 N Main, PO Box 517, Ellinwood | 620-564-3790
nationalbillingservice.com

SUNFLOWER BANK

13 N Main, Ellinwood | 620-564-2010
sunflowerbank.com

FUNERAL SERVICES

MINNIS FUNERAL CHAPEL

113 N Main, PO Box 246, Ellinwood | 620-564-2300
minnischapel.org

HOUSING, REALTY, & STORAGE

DENWOOD HOMES, LLC

306 E Santa Fe, Ellinwood | 620-566-7161

ELLINWOOD HEIGHTS APARTMENTS

515 #5 South Bismark, Ellinwood | 620-564-2180

THE ELLINWOOD OAKS

615 N Main St, Ellinwood | 620-792-3299

JOHN JACO REAL ESTATE

PO Box G, Great Bend | 620-792-2541

JOINER PROPERTIES, LLC

411 Santa Fe, PO Box 238, Ellinwood | 620-564-2818
joinerproperties.com

KELLER REAL ESTATE & INSURANCE AGENCY

1101 Williams, PO Box 945, Great Bend | 620-617-7467

MENGES RENTALS

202 Pembroke Lane, Ellinwood | 620-564-2283

INDIVIDUAL LANDLORDS

John Beachamp | 785-531-2793
Jean Doll | 620-566-7161
Chris Knop | 620-282-7881
Chris McCord | 620-617-6915
Rose Murphy | 620-786-0183

LODGING

HISTORIC WOLF HOTEL

1 N Main, Ellinwood | 620-639-6915
historicwolfhotel.com

NON-PROFIT ORGANIZATIONS

EDUCATIONAL STRATEGIES, DR. C STRECKER

108 N. Main, Ellinwood | 620-564-2510

ELLINWOOD AMERICAN LEGION #320

117 East Santa Fe, Ellinwood | 620-564-3252

ELLINWOOD COMMUNITY HISTORICAL SOCIETY

PO Box 111, Ellinwood | 620-564-2886
ellinwoodhistoricalsociety.com

ELLINWOOD HOSPITAL FOUNDATION

605 N Main, Ellinwood | 620-564-2548
ellinwooddistricthospital.org/foundation

ELLINWOOD SCHOOL AND COMMUNITY LIBRARY FOUNDATION

300 N Schiller, Ellinwood | 620-564-2306

GOLDEN BELT COMMUNITY FOUNDATION

1307 Williams St, Great Bend | 620-792-3000
goldenbeltcf.org

KANS FOR KIDS

PO Box 178, Hoisington | 620-653-2210

KNIGHTS OF COLUMBUS COUNCIL 1187

211 W. 2nd, Ellinwood | 785-623-3189

STAR OF HOPE INTERNATIONAL AMERICA INC

PO Box 427, 13 N Main, Ellinwood | 866-653-0321

SUNFLOWER DIVERSIFIED SERVICES, INC

PO Box 838, Great Bend | 620-792-1325
sunflowerdiv.com

UNITED WAY OF CENTRAL KANSAS

1125 Williams, Great Bend | 620-792-2403
www.uwck.org

RECREATION

CENTRAL KANSAS KARATE ACADEMY LLC

113 N Main, Ellinwood | 620-617-6490

ELLINWOOD REC. COMM. & WELLNESS CENTER

12 N Main, Ellinwood | 620-564-2337

GROVE PARK GOLF CLUB

407 W 3rd St, Ellinwood | 620-564-3123

SALON & BEAUTY

CALAMITY JANE'S SALON

123 N Main, Ellinwood | 620-282-3360

FIFTH STREET HAIR STUDIO

315 E 5th St, Ellinwood | 620-564-2083

KALA'S KURLS

311 E 2nd St, Ellinwood | 620-564-2881

THE MANE FOCUS

12 N Main, Ellinwood | 620-564-3828



EDUCATION • WILDLIFE • FUN

- KOCH WETLANDS EXHIBIT
- LIVE ANIMAL DISPLAYS
- GIFT STORE
- CHEYENNE BOTTOMS VAN TOURS
- NATURE PROGRAMS

FREE ADMISSION

8 miles NW of Ellinwood • 1-877-243-9268 • wetlandcenter.fhsu.edu

GREAT BEND CO-OP



www.greatbendcoop.com

Albert Boyd Dorrance Ellinwood Great Bend
Pawnee Rock Radium Russell Seward Susank



SUNFLOWER BANK

Bring out the best in the lives we touch...
Creating Possibility.

Sunflower Bank
13 N. Main St.
Ellinwood, KS 67526

620-564-2010

SunflowerBank.com

Member FDIC



DIVERSIFIED SERVICES, INC.
Serving Individuals with Disabilities

(620) 792-1321

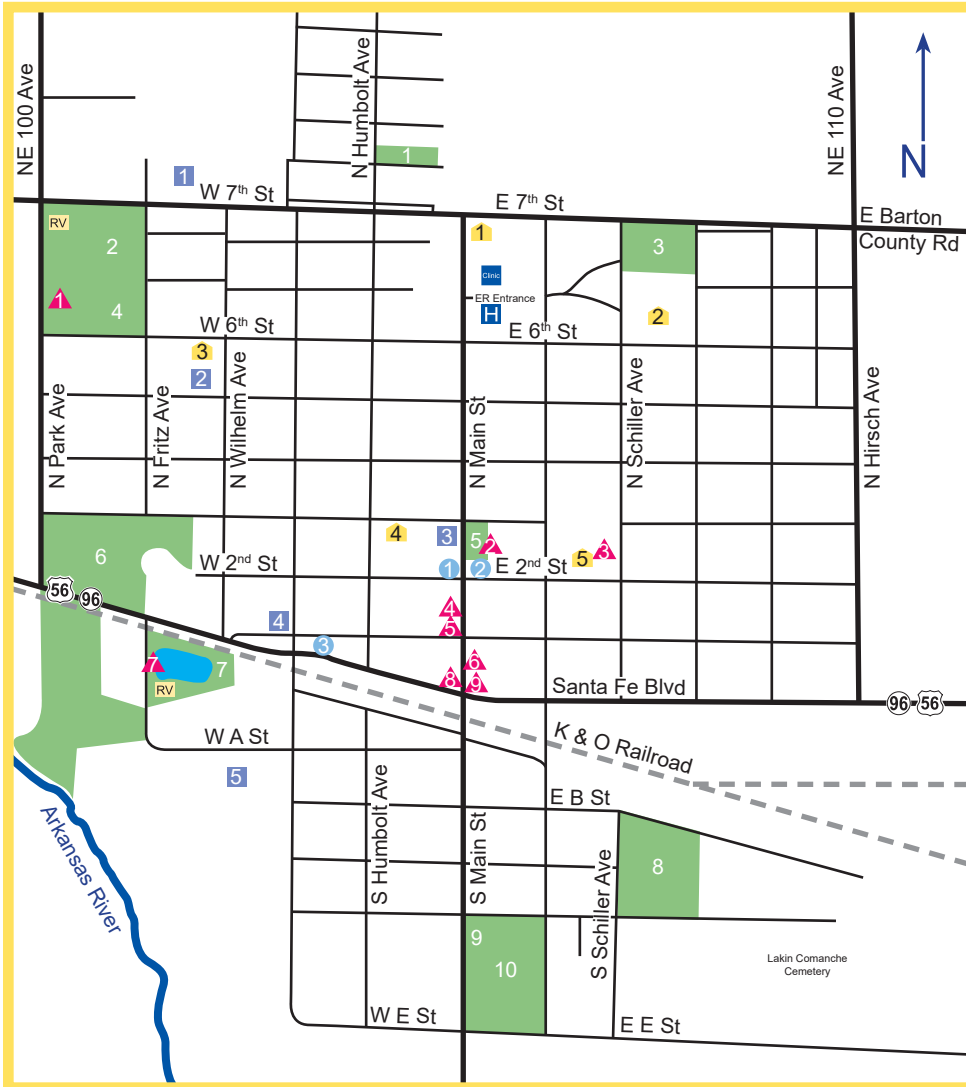
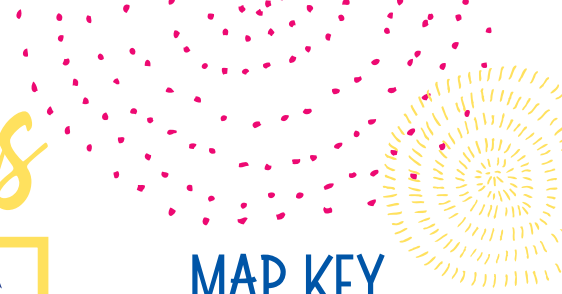


**Commercial, Residential, Agricultural,
and Industrial Construction**

**Metal Building Re-skins,
Repairs, and Remodeling**

**Metal Roofing, Guttering,
and Residential Roofing**

Ellinwood, Kansas



MAP KEY

All markers are numbered
North to South, and West to East.

PARKS, RECREATION, & SPORTS

- 1 Pohlman Park
- 2 Football Stadium
- 3 Tennis Courts & Soccer Fields
- 4 City Park & Picnic Pavilion
- 5 Wolf Park
- 6 Grove Park Golf Club (9 holes)
- 7 Wolf Pond
- 8 Worman Baseball/Softball Field
- 9 Tennis/Basketball Court
- 10 Baseball/Softball Fields

CHURCHES

- 1 Immanuel United Church of Christ
- 2 St. John Lutheran Church
- 3 St. Joseph Catholic Church
- 4 United Methodist Church
- 5 Calvary Baptist Church

SCHOOLS

- 1 St. John Child Dev. Center - Main
- 2 Ellinwood Grade School
- 3 St. John Child Dev. Center - Wilhelm
- 4 St. Joseph Catholic School
- 5 Ellinwood Middle/High School

POINTS OF INTEREST

- ▲ City Pool and Splash Pad
- ▲ Historic Wolf Park Band Shell
- ▲ Ellinwood Community/School Library
- ▲ Ellinwood Chamber of Commerce
- ▲ Museum of Ellinwood
- ▲ Ellinwood Wellness Center
- ▲ Natl Scenic Byway Stop at Wolf Pond
- ▲ Ellinwood Underground (West side)
- ▲ Ellinwood Underground (East side) and Historic Wolf Hotel with Underground Saloon

CITY/GOVERNMENT

- 1 United States Post Office
- 2 City Office
- 3 Ellinwood EMS/Fire/Police



OUR Reputation PRECEDES US

DEFINITELY WORTH THE VISIT!

GREAT PLACE TO SPARK YOUR KID'S IMAGINATION!

I AM SO THANKFUL THAT THEY HAVE SAVED AND RESTORED THESE EXCELLENT PIECES OF HISTORY!

WE ARE PLANNING OUR NEXT TRIP BACK!

A REAL INSIGHT INTO LIFE ON THE SANTA FE TRAIL BACK IN THE DAY.

THE PRESERVED HISTORY IS FASCINATING.

HIGHLY RECOMMEND THIS.

I WOULD GO BACK AND TAKE FRIENDS.

Reviews of Ellinwood and attractions from Facebook and TripAdvisor



facebook.com/EllinwoodChamberofCommerce

ELLINWOODCHAMBER.COM

